

# JEWELRY & ACCESSORIES FOR HER



**Ari D. Norman**  
LONDON

THE FIRST BRITISH SILVERSMITH EVER TO  
RECEIVE THE QUEEN'S AWARD FOR EXPORT



GT2015



GT2014



GT2024



BOX157

BOX157	3 piece vanity set in a mahogany presentation box	283mm / 11 <sup>1</sup> / <sub>8</sub> "	×	283mm / 11 <sup>1</sup> / <sub>8</sub> "	×	79mm / 3 <sup>1</sup> / <sub>8</sub> "
GT2014	Plain silver brush	229mm / 9"	×	76mm / 3"	×	—
GT2015	Plain silver mounted comb	171mm / 6 <sup>3</sup> / <sub>4</sub> "	×	29mm / 1 <sup>1</sup> / <sub>8</sub> "	×	—
GT2024	Plain silver mirror	238mm / 9 <sup>3</sup> / <sub>8</sub> "	×	235mm / 5"	×	—



PT438



PT412



GT558



GT404



GT141



GT486



GT436



GT452

GT141	Silver lace design perfume spray atomiser supplied with funnel (GT404)	76mm / 3"	0.6cl / 0.2fl/oz
GT404	Perfume bottle funnel	32mm / 1 <sup>1</sup> / <sub>4</sub> "	—
GT436	Silver lace design perfume bottle supplied with funnel (GT404)	41mm / 1 <sup>5</sup> / <sub>8</sub> "	0.3cl / 0.1fl/oz
GT452	Shell design perfume bottle supplied with funnel (GT404)	44mm / 1 <sup>3</sup> / <sub>4</sub> "	0.3cl / 0.1fl/oz
GT486	Silver lace design perfume bottle supplied with funnel (GT404)	48mm / 1 <sup>7</sup> / <sub>8</sub> "	0.6cl / 0.2fl/oz
GT558	Silver lace design pump atomiser supplied with funnel (GT404)	86mm / 3 <sup>3</sup> / <sub>8</sub> "	7.5cl / 2.5fl/oz
PT412	Heart shape perfume bottle on 66cm / 26" chain supplied with funnel (GT404)	38mm / 1 <sup>1</sup> / <sub>2</sub> "	0.3cl / 0.1fl/oz
PT438	Rope design perfume bottle on 66cm / 26" chain supplied with funnel (GT404)	44mm / 1 <sup>3</sup> / <sub>4</sub> "	0.3cl / 0.1fl/oz



GT159



GT456



GT159	Miniature mirror pendant with embossed Victorian pattern		32mm / 1 1/4"	×	76mm / 3"
GT456	Embossed Victorian pattern compact mirror		13mm / 1/2"	×	48mm / 1 7/8"
MIR408	Embossed Victorian table mirror with velvet back	<i>mirror size</i>	152mm / 6"	×	203mm / 8"
MIR409	Embossed Victorian table mirror with velvet back	<i>mirror size</i>	89mm / 3 1/2"	—	



MIR411



MIR410



MIR410	Art Deco pattern table mirror with wood back. Stands vertically or horizontally	<i>mirror size</i>	203mm / 8" x 254mm / 10"
MIR411	Egg and bead pattern table mirror with velvet back. Stands vertically or horizontally	<i>mirror size</i>	152mm / 6" x 203mm / 8"



GT104



GT135



GT491



BOX 44



GT913



PB434



GT550

BOX 44	Victorian 3 piece sewing set with needle case, thimble and scissors	—	—	—
GT104	Victorian thimble	22mm / 7/8"	×	16mm / 5/8"
GT135	Victorian needle case	60mm / 2 3/8"	—	—
GT491	Victorian style sewing scissors	114mm / 4 1/2"	—	—
GT550	Victorian pattern sewing set with needle case and thread wheel	44mm / 1 3/4"	×	22mm / 7/8"
GT913	Push button tape measure in centimeters and inches	13mm / 1/2"	×	51mm / 2"
PB434	Rectangular hinged sewing machine needlecase	51mm / 2"	×	32mm / 1 1/4" × 32mm / 1 1/4"



GT173



GT2274



GT2273



GT2275



GT854



GT2259



GT403



GT438



GT2263



GT104



GT212



GT265



GT213



GT487



GT488



GT489



GT465

GT104	Victorian thimble	22mm / $\frac{7}{8}$ "	x	16mm / $\frac{5}{8}$ "
GT173	Turtle pincushion	32mm / $1\frac{1}{4}$ "	x	19mm / $\frac{3}{4}$ "
GT212	Marcasite and garnet set bird thimble	22mm / $\frac{7}{8}$ "	x	19mm / $\frac{3}{4}$ "
GT213	Marcasite set fleur de lys thimble	19mm / $\frac{3}{4}$ "	x	19mm / $\frac{3}{4}$ "
GT265	Onyx and crystal set filigree thimble	22mm / $\frac{7}{8}$ "	x	16mm / $\frac{5}{8}$ "
GT403	Chick pincushion	22mm / $\frac{7}{8}$ "	x	25mm / 1"
GT438	Pig pincushion	32mm / $1\frac{1}{4}$ "	x	22mm / $\frac{7}{8}$ "
GT465	Plain thimble	22mm / $\frac{7}{8}$ "	x	16mm / $\frac{5}{8}$ "
GT487	Butterfly thimble	22mm / $\frac{7}{8}$ "	x	16mm / $\frac{5}{8}$ "
GT488	Owl thimble	25mm / 1"	x	16mm / $\frac{5}{8}$ "
GT489	Cat thimble	22mm / $\frac{7}{8}$ "	x	16mm / $\frac{5}{8}$ "
GT854	Rabbit pincushion	29mm / $1\frac{1}{8}$ "	x	25mm / 1"
GT2259	Pheasant pincushion	48mm / $1\frac{7}{8}$ "	x	19mm / $\frac{3}{4}$ "
GT2263	Meerkat pincushion	42mm / $1\frac{5}{8}$ "	x	42mm / $1\frac{5}{8}$ "
GT2273	Marcasite and garnet set snake pincushion	44mm / $1\frac{3}{4}$ "	x	25mm / 1"
GT2274	Marcasite and garnet set alligator pincushion	44mm / $1\frac{3}{4}$ "	x	25mm / 1"
GT2275	Marcasite set ladies' shoe pincushion	32mm / $1\frac{1}{4}$ "	x	22mm / $\frac{7}{8}$ "



GT2101

GT2101 Mahogany jewellery box with lift out trays 270mm / 10<sup>5</sup>/<sub>8</sub>" x 200mm / 8" x 146mm / 5<sup>3</sup>/<sub>4</sub>"





PB398

PB523

PB536

PB398	Oval hinged single ring box with embossed Victorian pattern and velvet insert	54mm / 2 <sup>1</sup> / <sub>8</sub> "	×	29mm / 1 <sup>1</sup> / <sub>8</sub> "	×	25mm / 1"
PB523	High polished hinged single ring box with blue velvet insert	48mm / 1 <sup>7</sup> / <sub>8</sub> "	×	38mm / 1 <sup>1</sup> / <sub>2</sub> "	×	32mm / 1 <sup>1</sup> / <sub>4</sub> "
PB536	Victorian engraved heart shaped hinged double ring box with blue velvet insert	54mm / 2 <sup>1</sup> / <sub>8</sub> "	×	54mm / 2 <sup>1</sup> / <sub>8</sub> "	×	25mm / 1"



BT512



EA509



NK520

BT512	Red enamel, opal and marcasite set bracelet with safety chain	187mm / 7 <sup>3</sup> / <sub>8</sub> "
EA509	Red enamel, opal and marcasite set post earrings with safety clip	19mm / <sup>3</sup> / <sub>4</sub> "
NK520	Red enamel, opal and marcasite set necklace	457mm / 18"



GT462



PT262



PT270



PT693



EA620



EA595

NK569



NK565



EA591

EA591	Cultured pearl and marcasite set post drop earrings	38mm / 1 1/2"	—
EA595	Jade and marcasite set post earrings	16mm / 5/8"	—
EA620	Two tone gold plated antique polish filigree post earrings	25mm / 1"	—
GT462	Hand engraved Victorian pattern opening bag pendant on 56cm / 26" flat curb chain	29mm / 1 1/8" × 25mm / 1"	—
NK565	Cultured pearl and marcasite set pendant on 41cm / 16" antique finish trace chain with 5cm / 2" adjuster	35mm / 1 3/8"	—
NK569	Jade and marcasite set pendant on 41cm / 16" antique finish trace chain with 5cm / 2" adjuster	29mm / 1 1/8"	—
PT262	Purple enamel and marcasite set opening bag pendant on 56cm / 26" flat curb chain	32mm / 1 1/4" × 25mm / 1"	—
PT270	Shell and marcasite set opening bag pendant on 56cm / 26" flat curb chain	22mm / 7/8" × 29mm / 1 1/8"	—
PT693	Two tone gold plated antique polish filigree pendant on antique finish Prince of Wales 51cm / 20" chain	48mm / 1 7/8"	—



EA200



EA267



NK201



B341



B351



B274



B275



B337

B274	Amethyst and marcasite set dragonfly brooch	25mm / 1"	x	22mm / 7/8"
B275	Amethyst and marcasite set beetle brooch	13mm / 1/2"	x	25mm / 1"
B337	Amethyst and marcasite set Victorian style bow brooch	57mm / 2 1/4"	x	38mm / 1 1/2"
B341	Amethyst and marcasite set Victorian style brooch	54mm / 2 1/8"	x	38mm / 1 1/2"
B351	Amethyst and marcasite set Victorian style bow brooch	54mm / 2 1/8"	x	35mm / 1 3/8"
EA200	Amethyst and marcasite set Victorian style post drop earrings	25mm / 1"	-	-
EA267	Amethyst and marcasite set Victorian style post drop earrings	41mm / 1 5/8"	-	-
NK201	Amethyst and marcasite set Victorian style pendant on 38cm / 15" antique finish Panza chain	25mm / 1"	-	-



NK207



EA621



B210



EA276



B285



BT207

B210	Black enamel, pearl and crystal brooch	19mm / $\frac{3}{4}$ "	×	38mm / $1\frac{1}{2}$ "
B285	Amethyst and marcasite set Victorian style brooch	29mm / $1\frac{1}{8}$ "	×	60mm / $2\frac{3}{8}$ "
BT207	Amethyst and marcasite set Victorian style bracelet with safety catch	191mm / $7\frac{1}{2}$ "		–
EA276	Amethyst and marcasite set Victorian style clip earrings	25mm / 1"		–
EA621	Black enamel, pearl and crystal post earrings	25mm / 1"		–
NK207	Black enamel, pearl and crystal necklace on 46cm / 18" fox tail chain	35mm / $1\frac{3}{8}$ "		–



PT276



PT277



PT201



PT202



PT476



PT201	Small marcasite set oval locket on 51cm / 20" antique finish Prince of Wales chain	29mm / 1 1/8"
PT202	Marcasite set round locket on 51cm / 20" antique finish Prince of Wales chain	29mm / 1 1/8"
PT276	Marcasite and garnet set oval locket on 41cm / 16" antique finish belcher chain with 5cm / 2" adjuster	38mm / 1 1/2"
PT277	Marcasite and garnet set heart locket on 46cm / 18" antique finish belcher chain with 5cm / 2" adjuster	35mm / 1 3/8"
PT476	Mother of pearl set filigree heart pendant on 51cm / 20" flat curb chain	19mm / 3/4"



PT463



PT414



PT464



PT466



PT465

PT414	Plain heart locket on 51cm / 20" flat curb chain	38mm / 1½"
PT463	Victorian 4 part oval locket on 56cm / 22" flat curb chain <i>closed</i>	44mm / 1¾"
	<i>open</i>	124mm / 5"
PT464	Small plain oval locket on 51cm / 20" flat curb chain	32mm / 1¼"
PT465	Plain round locket on 51cm / 20" flat curb chain	35mm / 1⅜"
PT466	Medium plain oval locket on 56cm / 22" flat curb chain	43mm / 1¾"



PT420



PT419



PT478



PT462



PT419	Duo heart locket on 56cm / 22" flat curb chain	29mm / 1 <sup>1</sup> / <sub>8</sub> "
PT420	Duo oval locket on 56cm / 22" flat curb chain	35mm / 1 <sup>3</sup> / <sub>8</sub> "
PT462	Victorian 4 part heart locket on 56cm / 22" flat curb chain	41mm / 1 <sup>5</sup> / <sub>8</sub> "
PT478	Victorian 4 part marcasite and garnet set heart locket on 56cm / 22" antique finish Prince of Wales chain	41mm / 1 <sup>5</sup> / <sub>8</sub> "





EA508



EA507



EA506

EA506	Red enamel and marcasite set post earrings with safety clip	19mm / 3/4"
EA507	Blue enamel and marcasite set post earrings with safety clip	19mm / 3/4"
EA508	Green enamel and marcasite set post earrings with safety clip	19mm / 3/4"
NK512	Green enamel and marcasite set pendant on 41cm / 16" antique finish Prince of Wales chain with 5cm / 2" adjuster	25mm / 1"
NK513	Blue enamel and marcasite set pendant on 41cm / 16" antique finish Prince of Wales chain with 5cm / 2" adjuster	25mm / 1"
NK514	Red enamel and marcasite set pendant on 41cm / 16" antique finish Prince of Wales chain with 5cm / 2" adjuster	25mm / 1"



EA570



BE426



EA568



BE424



BE424	Black enamel and marcasite set hinged bangle	70mm / 2 <sup>3</sup> / <sub>4</sub> "
BE426	White enamel and marcasite set hinged bangle	70mm / 2 <sup>3</sup> / <sub>4</sub> "
EA568	Black enamel and marcasite set post earrings with safety clip	19mm / 3/4"
EA570	White enamel and marcasite set post earrings with safety clip	19mm / 3/4"



BE410

BE412

BE411



NK552

NK570

NK551

BE410	Red enamel and marcasite set hinged bangle	70mm / 2 <sup>3</sup> / <sub>4</sub> "
BE411	Green enamel and marcasite set hinged bangle	70mm / 2 <sup>3</sup> / <sub>4</sub> "
BE412	Blue enamel and marcasite set hinged bangle	70mm / 2 <sup>3</sup> / <sub>4</sub> "
NK551	Green enamel and marcasite set pendant on 41cm / 16" antique finish trace chain with 5cm / 2" adjuster	76mm / 3"
NK552	Red enamel and marcasite set pendant on 41cm / 16" antique finish trace chain with 5cm / 2" adjuster	76mm / 3"
NK570	Blue enamel and marcasite set pendant on 41cm / 16" antique finish trace chain with 5cm / 2" adjuster	76mm / 3"



EA514



EA515



EA513



NK524

NK526

NK525

EA513	Red enamel and marcasite set post earrings	18mm / 1/2"
EA514	Green enamel and marcasite set post earrings	18mm / 1/2"
EA515	Blue enamel and marcasite set post earrings	18mm / 1/2"
NK524	Green enamel and marcasite set pendant on 41cm / 16" antique finish trace chain with 5cm / 2" adjuster	29mm / 1 1/8"
NK525	Red enamel and marcasite set pendant on 41cm / 16" antique finish trace chain with 5cm / 2" adjuster	29mm / 1 1/8"
NK526	Blue enamel and marcasite set pendant on 41cm / 16" antique finish trace chain with 5cm / 2" adjuster	29mm / 1 1/8"



NK503



NK505



NK504



BE416



BE418



BE417

BE416	Red enamel and marcasite set hinged bangle	67mm / 2 <sup>5</sup> / <sub>8</sub> "
BE417	Green enamel and marcasite set hinged bangle	67mm / 2 <sup>5</sup> / <sub>8</sub> "
BE418	Blue enamel and marcasite set hinged bangle	67mm / 2 <sup>5</sup> / <sub>8</sub> "
NK503	Red enamel and marcasite set pendant on antique finish mesh chain	51mm / 2"
NK504	Green enamel and marcasite set pendant on antique finish mesh chain	51mm / 2"
NK505	Blue enamel and marcasite set pendant on antique finish mesh chain	51mm / 2"



NK510



NK509



NK511



NK509	Blue enamel and marcasite set hinged keepsake egg with sapphire set clasp on antique finish mesh chain	41mm / 1 <sup>5</sup> / <sub>8</sub> "
NK510	Red enamel and marcasite set hinged keepsake egg with garnet set clasp on antique finish mesh chain	41mm / 1 <sup>5</sup> / <sub>8</sub> "
NK511	Green enamel and marcasite set hinged keepsake egg with emerald set clasp on antique finish mesh chain	41mm / 1 <sup>5</sup> / <sub>8</sub> "



PT690



B395



PT496



NK542



NK515



EA563

B395	Mother of pearl, onyx and crystal set striped heart brooch and pendant	29mm / 1 <sup>1</sup> / <sub>8</sub> "	×	35mm / 1 <sup>3</sup> / <sub>8</sub> "
EA563	Red enamel and marcasite set floating heart drop earrings	–		32mm / 1 <sup>1</sup> / <sub>4</sub> "
NK515	Red enamel and marcasite set floating heart pendant on 41cm / 16" antique finish Prince of Wales chain with 5cm / 2" adjuster	–		25mm / 1"
NK542	Marcasite and garnet set heart pendant on 41cm / 16" antique finish belcher chain with 5cm / 2" adjuster	–		38mm / 1 <sup>1</sup> / <sub>2</sub> "
PT496	Red crystal heart pendant with spring-loaded clip fitting	–		32mm / 1 <sup>1</sup> / <sub>4</sub> "
PT690	Mother of pearl and marcasite set hearts pendant on 41cm / 16" antique finish Prince of Wales chain with 5cm / 2" adjuster	–		41mm / 1 <sup>5</sup> / <sub>8</sub> "



BT525



NK535



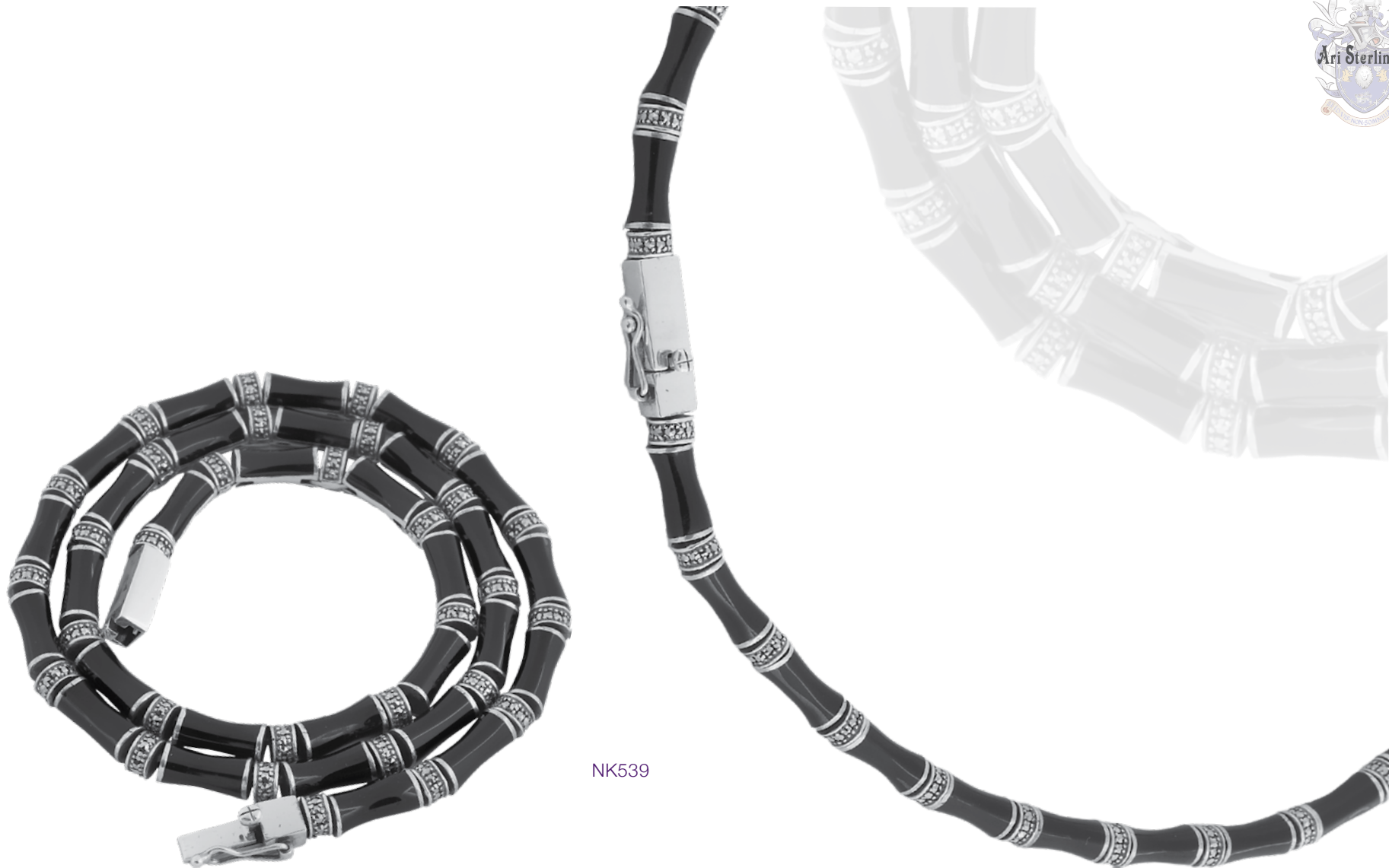
EA552



EA596

BT525	Black enamel and marcasite set bamboo style bracelet with safety catch	197mm / 7 <sup>3</sup> / <sub>4</sub> "
EA552	Black enamel and marcasite set bamboo style half hoop post earrings	19mm / <sup>3</sup> / <sub>4</sub> "
EA596	Black enamel and marcasite set bamboo style drop earrings	44mm / 1 <sup>3</sup> / <sub>4</sub> "
NK535	Black enamel and marcasite set bamboo style pendant on 41cm / 16" antique finish trace chain with 5cm / 2" adjuster	38mm / 1 <sup>1</sup> / <sub>2</sub> "





NK539

NK539 Black enamel and marcasite set bamboo style necklace with safety catch 457mm / 18"



EA551



EA566



NK540



NK536



BT526

BT526	Green enamel and marcasite set bamboo style bracelet with safety catch	197mm / 7 <sup>3</sup> / <sub>4</sub> "
EA551	Green enamel and marcasite set bamboo style half hoop post earrings	19mm / <sup>3</sup> / <sub>4</sub> "
EA566	Green enamel and marcasite set bamboo style drop earrings	44mm / 1 <sup>3</sup> / <sub>4</sub> "
NK536	Green enamel and marcasite bamboo style pendant on 41cm / 16" antique finish trace chain with 5cm / 2" adjuster	38mm / 1 <sup>1</sup> / <sub>2</sub> "
NK540	Green enamel and marcasite set bamboo style necklace with safety catch	457mm / 18"



BT513



NK541



NK527

EA553

EA565

BT513	Red enamel and marcasite set bamboo style bracelet with safety catch	197mm / 7 <sup>3</sup> / <sub>4</sub> "
EA553	Red enamel and marcasite set bamboo style half hoop post earrings	19mm / <sup>3</sup> / <sub>4</sub> "
EA565	Red enamel and marcasite set bamboo style drop earrings	44mm / 1 <sup>3</sup> / <sub>4</sub> "
NK527	Red enamel and marcasite set bamboo style necklace with safety catch	457mm / 18"
NK541	Red enamel and marcasite set bamboo style pendant on 41cm / 16" antique finish trace chain with 5cm / 2" adjuster	38mm / 1 <sup>1</sup> / <sub>2</sub> "



EA290



EA289



B343



B345



B347

B343	Onyx, marcasite, garnet, cultured pearl and emerald set Art Nouveau dragonfly brooch	64mm / 2½"	×	64mm / 2½"
B345	Mother of pearl, marcasite, amethyst, cultured pearl and emerald set Art Nouveau cockerel brooch	64mm / 2½"	×	73mm / 2⅞"
B347	Onyx, marcasite, cultured pearl and emerald set Art Nouveau scarab brooch	41mm / 1⅝"	×	51mm / 2"
EA289	Onyx, marcasite, cultured pearl and emerald set Art Nouveau scarab post drop earrings	38mm / 1½"	-	
EA290	Onyx, marcasite, cultured pearl and emerald set Art Nouveau dragonfly post drop earrings	57mm / 2¼"	-	



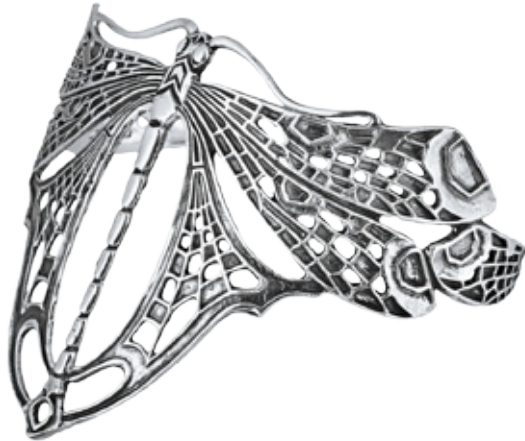
B469



B635



B603



BE420



B321

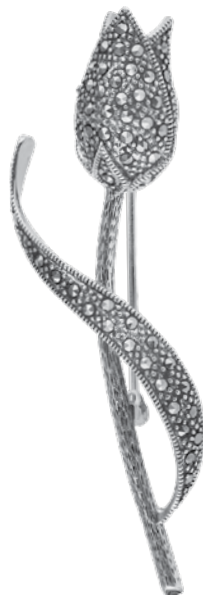


BE428

B321	Art Nouveau lady set with crystals on black enamel semi-circle brooch	51mm / 2"	×	89mm / 3 1/2"
B469	Dragonfly brooch	44mm / 1 3/4"	×	67mm / 2 5/8"
B603	Sandblasted and antique polished Art Nouveau lady with sun hat brooch and pendant	41mm / 1 5/8"		—
B635	Blue enamel and marcasite set lady on onyx brooch and pendant	30mm / 1 3/8"		—
BE420	Dragonfly bangle	64mm / 2 1/2"	×	60mm / 2 3/8"
BE428	"You and me" bead hook clasp bangle	67mm / 2 5/8"		—



B372



B399



EA526



B375



NK531

B372	Green enamel, opal and marcasite set flower brooch	25mm / 1"	×	44mm / 1 <sup>3</sup> / <sub>4</sub> "
B375	Purple enamel, amethyst, pearl and marcasite set floral brooch	32mm / 1 <sup>1</sup> / <sub>4</sub> "	×	64mm / 2 <sup>1</sup> / <sub>2</sub> "
B399	Marcasite set tulip brooch	70mm / 2 <sup>3</sup> / <sub>4</sub> "		-
EA526	Pearl and marcasite set floral post drop earrings	32mm / 1 <sup>1</sup> / <sub>4</sub> "		-
NK531	Pearl and marcasite set floral necklace on 41cm / 16" antique finish belcher chain with 5cm / 2" adjuster	248mm / 9 <sup>3</sup> / <sub>4</sub> "		-



B388



B553



B221



EA594



B219



B213



B552



B222

B213	Green enamel and marcasite set lizard brooch	41mm / 1 <sup>5</sup> / <sub>8</sub> "	×	76mm / 3"
B219	Pink enamel, amethyst and marcasite set butterfly brooch	38mm / 1 <sup>1</sup> / <sub>2</sub> "	×	44mm / 1 <sup>3</sup> / <sub>4</sub> "
B221	Green enamel and marcasite set frog brooch	44mm / 1 <sup>3</sup> / <sub>4</sub> "	×	44mm / 1 <sup>3</sup> / <sub>4</sub> "
B222	Pale yellow and blue enamel and marcasite set dragonfly brooch	54mm / 2 <sup>1</sup> / <sub>8</sub> "	×	67mm / 2 <sup>5</sup> / <sub>8</sub> "
B388	Mother of pearl, blue topaz and marcasite set dragonfly brooch	35mm / 1 <sup>3</sup> / <sub>8</sub> "	×	57mm / 2 <sup>1</sup> / <sub>4</sub> "
B552	Red, black, yellow and green enamel and marcasite set ladybird on leaf brooch and pendant	38mm / 1 <sup>1</sup> / <sub>2</sub> "	×	51mm / 2"
B553	Green and yellow enamel and marcasite set butterfly brooch and pendant	38mm / 1 <sup>1</sup> / <sub>2</sub> "	×	41mm / 1 <sup>5</sup> / <sub>8</sub> "
EA594	Red, black, yellow and green enamel and marcasite set ladybird on leaf drop earrings	29mm / 1 <sup>1</sup> / <sub>8</sub> "		—



B382



EA300



B368



B524



B225



B390



B393

B225	Blue and green enamel and marcasite set butterfly brooch	44mm / 1 <sup>3</sup> / <sub>4</sub> "	×	54mm / 2 <sup>1</sup> / <sub>8</sub> "
B368	Red and green enamel with onyx and yellow topaz bee brooch	25mm / 1"	×	57mm / 2 <sup>1</sup> / <sub>4</sub> "
B382	Red enamel and marcasite set ladybird brooch	13mm / 1/2"	×	19mm / 3/4"
B390	Pale yellow and blue enamel and marcasite set dragonfly brooch	64mm / 2 <sup>1</sup> / <sub>2</sub> "	×	48mm / 1 <sup>7</sup> / <sub>8</sub> "
B393	Navy blue enamel, opal, pearl and marcasite set dragonfly brooch	44mm / 1 <sup>3</sup> / <sub>4</sub> "	×	35mm / 1 <sup>3</sup> / <sub>8</sub> "
B524	Blue enamel, clear and red crystal and marcasite set spider brooch	32mm / 1 <sup>1</sup> / <sub>4</sub> "	×	48mm / 1 <sup>7</sup> / <sub>8</sub> "
B639	Crystal butterfly brooch	48mm / 1 <sup>7</sup> / <sub>8</sub> "	×	54mm / 2 <sup>1</sup> / <sub>8</sub> "
EA300	Red enamel and marcasite set ladybird drop earrings	32mm / 1 <sup>1</sup> / <sub>4</sub> "		-



B639





B507



B509



B332



B465



B642



B598



B641

B332	Marcasite and red crystal set flamingo brooch	60mm / 2 <sup>3</sup> / <sub>8</sub> "	×	32mm / 1 <sup>1</sup> / <sub>4</sub> "
B465	Abalone shell and marcasite set owl brooch	38mm / 1 <sup>1</sup> / <sub>2</sub> "	×	38mm / 1 <sup>1</sup> / <sub>2</sub> "
B507	Black and white enamel, red crystal and marcasite set penguin brooch	38mm / 1 <sup>1</sup> / <sub>2</sub> "	×	19mm / <sup>3</sup> / <sub>4</sub> "
B509	Yellow and green enamel and marcasite set hummingbird brooch	51mm / 2"	×	70mm / 2 <sup>3</sup> / <sub>4</sub> "
B598	Black and white enamel and marcasite set cat brooch	38mm / 1 <sup>1</sup> / <sub>2</sub> "	×	35mm / 1 <sup>3</sup> / <sub>8</sub> "
B641	Crystal bat brooch	41mm / 1 <sup>5</sup> / <sub>8</sub> "	×	79mm / 3 <sup>1</sup> / <sub>8</sub> "
B642	Purple enamel and marcasite set cat brooch	44mm / 1 <sup>3</sup> / <sub>4</sub> "	×	35mm / 1 <sup>3</sup> / <sub>8</sub> "



B224



B389



B366



PT433



B525



B333



B334

B224	Marcasite and garnet set pink enamel flamingo brooch	98mm / 3 <sup>7</sup> / <sub>8</sub> "	×	38mm / 1 <sup>1</sup> / <sub>2</sub> "
B309	Crystal set elephant head brooch	41mm / 1 <sup>5</sup> / <sub>8</sub> "	×	38mm / 1 <sup>1</sup> / <sub>2</sub> "
B333	Marcasite and emerald set dachshund dog brooch	22mm / 7/ <sub>8</sub> "	×	48mm / 1 <sup>7</sup> / <sub>8</sub> "
B334	Marcasite and emerald set frog brooch	25mm / 1"	×	35mm / 1 <sup>3</sup> / <sub>8</sub> "
B366	Marcasite and garnet set red, blue and green enamel parrot brooch	41mm / 1 <sup>5</sup> / <sub>8</sub> "	×	19mm / 3/ <sub>4</sub> "
B389	Green enamel and marcasite set swallow brooch	32mm / 1 <sup>1</sup> / <sub>4</sub> "	×	76mm / 3"
B525	Black enamel, red and clear crystal and marcasite set cat brooch	44mm / 1 <sup>3</sup> / <sub>4</sub> "	×	38mm / 1 <sup>1</sup> / <sub>2</sub> "
PT433	Moving teddy bear pendant on 51cm / 20" flat curb chain	38mm / 1 <sup>1</sup> / <sub>2</sub> "		—



B309



BT205



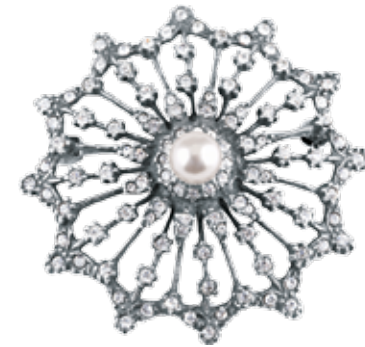
EA212



B211



EA210



B638

B211	Crystal and cultured pearl star brooch	29mm / 1 1/8"	×	29mm / 1 1/8"
B638	Crystal and cultured pearl starburst brooch	38mm / 1 1/2"	×	38mm / 1 1/2"
BT205	Crystal greek key design bangle with safety chain	64mm / 2 1/2"	×	13mm / 1/2"
EA210	Crystal greek key design clip earrings	19mm / 3/4"		–
EA212	Crystal and cultured pearl star post earrings	19mm / 3/4"		–



NK580



NK574



NK581

NK582



EA618



EA616



EA617



EA619

EA616	Two tone gold plated and silver floral design mother of pearl set drop earrings	38mm / 1 1/2"	-
EA617	Floral design mother of pearl set drop earrings	38mm / 1 1/2"	-
EA618	Mackintosh style french drop earrings	38mm / 1 1/2"	-
EA619	Mackintosh style french drop earrings	19mm / 3/4"	-
NK574	Floral design red and green enamel mother of pearl set pendant on 46cm / 18" trace chain with 5cm / 2" adjuster	35mm / 1 3/8"	32mm / 1 1/4"
NK580	Two tone gold plated and silver floral design mother of pearl set pendant on 46cm / 18" trace chain with 5cm / 2" adjuster	44mm / 1 3/4"	25mm / 1"
NK581	Mackintosh style pendant on 46cm / 18" flat curb chain	38mm / 1 1/2"	-
NK582	Mackintosh style pendant on 46cm / 18" flat curb chain	19mm / 3/4"	-



NK575



BT563



NK576



EA612



NK577



EA614



EA611

BT563	Bracelet with swirl design set with cubic zirconia	184mm / 7 <sup>1</sup> / <sub>4</sub> "
EA611	Citrine and cubic zirconia set swirl design drop earrings	32mm / 1 <sup>1</sup> / <sub>4</sub> "
EA612	Two tone gold plated and silver set with cubic zirconia spiral design post drop earrings	32mm / 1 <sup>1</sup> / <sub>4</sub> "
EA614	Two tone gold plated and silver set with cubic zirconia droplet design post drop earrings	32mm / 1 <sup>1</sup> / <sub>4</sub> "
NK575	Citrine and cubic zirconia set swirl design pendant on 46cm / 18" flat curb chain	38mm / 1 <sup>1</sup> / <sub>2</sub> "
NK576	Two tone gold plated and silver set with cubic zirconia spiral design pendant on 46cm / 18" trace chain	41mm / 1 <sup>5</sup> / <sub>8</sub> "
NK577	Two tone gold plated and silver set with cubic zirconia droplet design pendant on chain 46cm / 18" trace chain	41mm / 1 <sup>5</sup> / <sub>8</sub> "



EA597



PT493



B323



BE423



EA104

B307	Black enamel and crystal Art Deco semi-circles brooch and pendant	32mm / 1 <sup>1</sup> / <sub>4</sub> "	×	35mm / 1 <sup>3</sup> / <sub>8</sub> "
B323	Black enamel and crystal Art Deco triangular brooch and pendant	51mm / 2"	×	25mm / 1"
BE423	Woven hatch design cuff bangle	64mm / 2 <sup>1</sup> / <sub>2</sub> "	×	48mm / 1 <sup>7</sup> / <sub>8</sub> "
EA104	Crystal and onyx set black enamel Art Deco post drop earrings	48mm / 1 <sup>7</sup> / <sub>8</sub> "	-	-
EA597	Woven hatch design teardrop earrings	60mm / 2 <sup>3</sup> / <sub>8</sub> "	-	-
PT493	Woven hatch design pendant on 56cm / 22" antique finish Prince of Wales chain	51mm / 2"	-	-



B307



EA607



B508



EA208



EA221

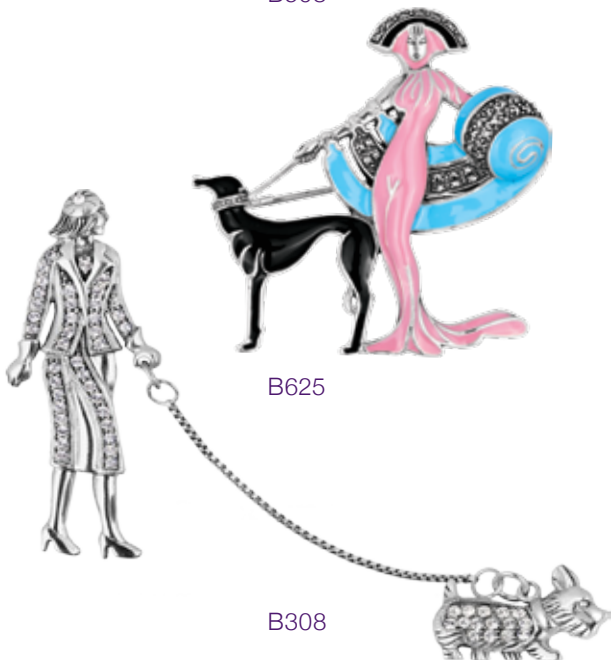
BT206



B319



B320



B625

B308

B308	Crystal set lady and Scottie dog brooch	48mm / 1 <sup>7</sup> / <sub>8</sub> "	×	19mm / <sup>3</sup> / <sub>4</sub> "
B319	Onyx, green agate and marcasite set oval brooch	41mm / 1 <sup>5</sup> / <sub>8</sub> "	×	57mm / 2 <sup>1</sup> / <sub>4</sub> "
B320	Onyx, green agate and marcasite set brooch	64mm / 2 <sup>1</sup> / <sub>2</sub> "	×	22mm / <sup>7</sup> / <sub>8</sub> "
B508	Red and black enamel marcasite set lady and dog brooch	51mm / 2"	×	38mm / 1 <sup>1</sup> / <sub>2</sub> "
B625	Pink, blue and black enamel marcasite set lady and dog brooch	44mm / 1 <sup>3</sup> / <sub>4</sub> "	×	44mm / 1 <sup>3</sup> / <sub>4</sub> "
BT206	Onyx, green agate and marcasite set bracelet with safety catch	200mm / 8"		–
EA208	Onyx, green agate and marcasite set drop post earrings	76mm / 3"		–
EA221	Onyx, green agate and marcasite set drop post earrings	44mm / 1 <sup>3</sup> / <sub>4</sub> "		–
EA607	Marcasite set snake on hoop post earring	29mm / 1 <sup>1</sup> / <sub>8</sub> "		–



B325



NK224



EA606



EA286



B326



B325	Mother of pearl, amethyst, emerald, marcasite and crystal set panther brooch	76mm / 3"	×	44mm / 1 <sup>3</sup> / <sub>4</sub> "
B326	Mother of pearl, marcasite and emerald set panther brooch	54mm / 2 <sup>1</sup> / <sub>8</sub> "	×	51mm / 2"
EA286	Mother of pearl, marcasite and emerald set panther post earrings with safety clip	29mm / 1 <sup>1</sup> / <sub>8</sub> "	–	–
EA606	Marcasite set panther head hoop post earring	29mm / 1 <sup>1</sup> / <sub>8</sub> "	–	–
NK224	Mother of pearl, marcasite and emerald set panther pendant on 41cm / 16" antique belcher chain with 5cm / 2" adjuster	29mm / 1 <sup>1</sup> / <sub>8</sub> "	–	–





B361



B330



NK225



EA296



EA295



B353



B327

B327	Onyx, marcasite, pearl and emerald set panther brooch with clear natural rock mineral crystal drop	92mm / 3 <sup>5</sup> / <sub>8</sub> "	×	44mm / 1 <sup>3</sup> / <sub>4</sub> "
B330	Onyx, marcasite and emerald set twin headed panther brooch with clear natural rock mineral crystal drop	67mm / 2 <sup>5</sup> / <sub>8</sub> "	×	29mm / 1 <sup>1</sup> / <sub>8</sub> "
B353	Green agate, marcasite and emerald set panther brooch with cultured pearl drop	76mm / 3"	×	32mm / 1 <sup>1</sup> / <sub>4</sub> "
B361	Onyx, marcasite and emerald set panther brooch	54mm / 2 <sup>1</sup> / <sub>8</sub> "	×	51mm / 2"
EA295	Onyx, marcasite and emerald set panther post earrings with safety clip	29mm / 1 <sup>1</sup> / <sub>8</sub> "		–
EA296	Green agate, marcasite and emerald set panther post earrings with safety clip	29mm / 1 <sup>1</sup> / <sub>8</sub> "		–
NK225	Onyx, marcasite and emerald set panther pendant on 41cm / 16" antique belcher chain with 5cm / 2" adjuster	29mm / 1 <sup>1</sup> / <sub>8</sub> "		–



B439



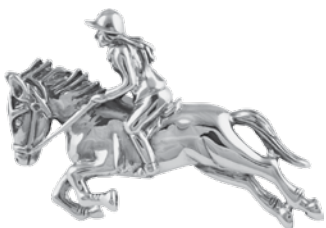
B640



B404



PT404



B436



B440



B415



BE434



BE435

B404	Riding crop brooch	60mm / 2 <sup>3</sup> / <sub>8</sub> "	-
B415	Trotting horse brooch	19mm / <sup>3</sup> / <sub>4</sub> "	x 25mm / 1"
B436	Jockey on horse brooch	25mm / 1"	x 41mm / 1 <sup>5</sup> / <sub>8</sub> "
B439	Riding crop and horse head brooch	38mm / 1 <sup>1</sup> / <sub>2</sub> "	-
B440	Galloping horse brooch	25mm / 1"	x 44mm / 1 <sup>3</sup> / <sub>4</sub> "
B640	Galloping horses brooch	22mm / <sup>7</sup> / <sub>8</sub> "	x 44mm / 1 <sup>3</sup> / <sub>4</sub> "
BE434	Lucky horseshoe bangle	17mm / <sup>3</sup> / <sub>4</sub> "	x 64mm / 2 <sup>1</sup> / <sub>2</sub> "
BE435	Horse bit bangle	14mm / <sup>3</sup> / <sub>4</sub> "	x 64mm / 2 <sup>1</sup> / <sub>2</sub> "
PT404	Lucky horseshoe pendant on 46cm / 18" flat curb chain	32mm / 1 <sup>1</sup> / <sub>4</sub> "	-



PT279



PT280



NK586



B619



B623



B624



BE431



B620

B619	Crystal and amethyst set stirrup and crop brooch	32mm / 1¼"	x	38mm / 1½"
B620	Crystal set horse head brooch	32mm / 1¼"	x	25mm / 1"
B623	Crystal and amethyst set horse and carriage brooch	25mm / 1"	x	51mm / 2"
B624	Crystal and amethyst set riding boot and crop brooch	19mm / ¾"	x	38mm / 1½"
BE431	Galloping horses bangle	19mm / ¾"	x	64mm / 2½"
NK586	Galloping horse necklace on 36cm / 14⅛" antique belcher chain with 5cm / 2" adjuster	62mm / 1¼"		—
PT279	Crystal set riding saddle pendant on 46cm / 18" antique finish Prince of Wales chain	19mm / ¾"		—
PT280	Crystal and amethyst set riding boot and crop pendant on 51cm / 20" antique finish Prince of Wales chain	38mm / 1½"		—



ARGENTA HOUSE

ARGENTA WAY

LONDON

NW10 0AZ

ENGLAND

 +44(0)20 8900 0700

 +44(0)20 8900 1277

 [info@aridnorman.co.uk](mailto:info@aridnorman.co.uk)

 [www.aridnorman.co.uk](http://www.aridnorman.co.uk)

 [twitter.com/AriDNorman](https://twitter.com/AriDNorman)

 [facebook.com/AriDNormanLtd](https://facebook.com/AriDNormanLtd)

**Ari D. Norman**

LONDON